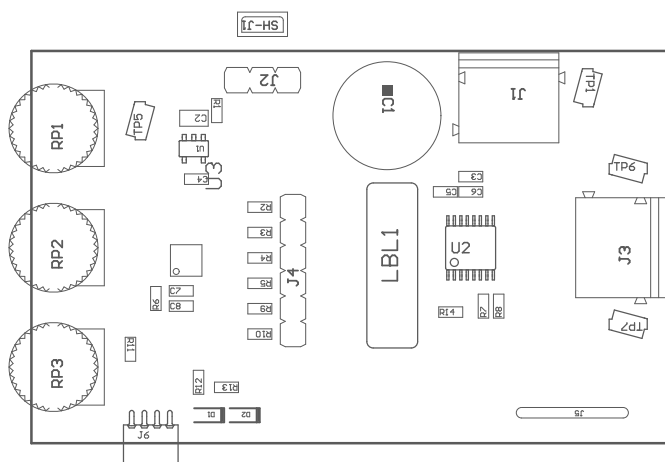


- ZZ1 Install label in silkscreened box after final wash. Text shall be 8 pt font. Text shall be per the Label Table in the PDF schematic.
- ZZ2 These assemblies are ESD sensitive, ESD precautions shall be observed.
- ZZ3 These assemblies must be clean and free from flux and all contaminants. Use of no clean flux is not acceptable.
- ZZ4 These assemblies must comply with workmanship standards IPC-A-610 Class 2, unless otherwise specified.
- ZZ5 Board material shall meet UL MOT of 130C



COMPONENTS MARKED 'DNP' SHOULD NOT BE POPULATED.
 ASSEMBLY VARIANT: 001

PCB VIEWED FROM TOP SIDE	BOARD #: MD014	REV: B	SUN REV: Not In VersionControl
	TID #: N/A		
PLOT NAME = Top Assembly Drawing	GENERATED : 1/15/2020	1:54:50 PM	TEXAS INSTRUMENTS



COMPONENTS MARKED 'DNP' SHOULD NOT BE POPULATED.
ASSEMBLY VARIANT: 001

PCB VIEWED FROM BOTTOM SIDE	BOARD #: MD014	REV: B	SUN REV: Not In VersionControl
	TID #: N/A		
PLOT NAME = Bottom Assembly Drawing	GENERATED : 1/15/2020	1:54:51 PM	TEXAS INSTRUMENTS